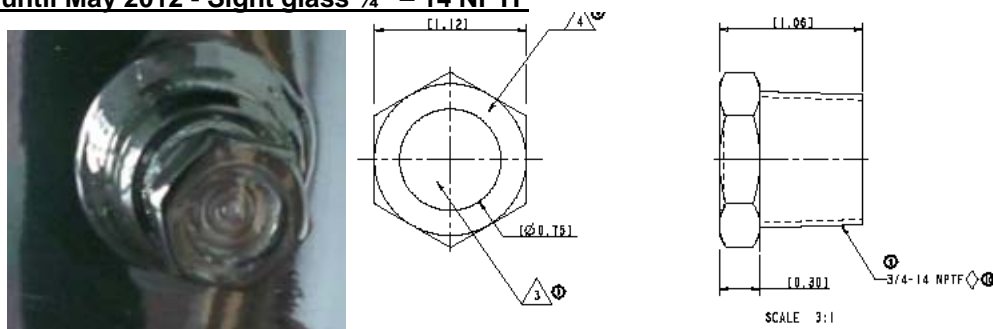


NO: 21-12
DATE: May 7th 2012
TO: All Customers
FROM: Emerson Climate Technologies – Europe
SUBJECT: Change Of Sight Glass Design For All 7-15HP Refrigeration Scroll ZB*KCE/MCE, ZS*K4E/M4E and ZF*K4E/KVE

In order to continuously improve its product quality, Emerson Climate Technologies Europe is implementing a new type of sight glass on its refrigeration Scroll ZB56KCE to ZB11MCE, ZS56K4E to ZS11M4E and ZF24K*E to ZF48K*E. The production implementation of the new sight glass is planned for mid May 2012. The exact production date and serial numbers will be communicated when the changeover is effective in production.

“Old Design” until May 2012 - Sight glass 3/4” – 14 NPTF



“New Design” from May 2012 - Sight glass 1 3/4” – 12 UN



Overview of affected compressor models:

Motor Size (hp)	ZB Range	ZS Range	ZF Range With Liquid Injection	ZF KVE Range With Vapor Injection
7.5	ZB56KCE-TW*	ZS56 K4E-TW*	ZF24K4E-TW*	ZF24KVE-TW*
10.0	ZB75KCE-TW*	ZS75K4E-TW*	ZF33K4E-TW*	ZF33KVE-TW*
13.0	ZB92KCE-TW*	ZS92K4E-TW*	ZF40K4E-TW*	ZF40KVE-TW*
15.0	ZB11MCE-TW*	ZS11M4E-TW*	ZF48K4E-TW*	ZF48KVE-TW*

Available spare part kits for Sight glass replacement

8026844 kit oil sight glass, currently used on the “Old Design”

The kit contains one part with teflon material on the sight glass threads. There is no extra gasket. LOCTITE (for exLOCTITE 567), could be used to tighten the oil sight glass during service.

- Compressor sight glass connection: conical ¾” – 14 NPTF
- Recommended sight glass torque: 74-86 Nm

8545003 kit oil sight glass, new design, available from May 2012

The kit contains: single glass (# 8559711), 1 ¾” nut (# 8559733) and the teflon gasket (# 2050772).

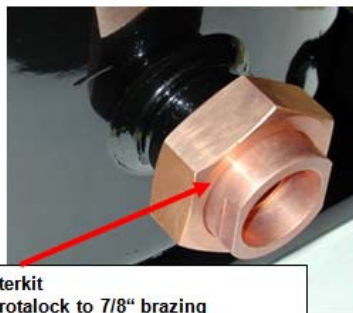
- Compressor sight glass connection: external thread 1 ¾”-12UN
- Recommended sight glass torque: 70-90 Nm

Available kits for tandem and parallel applications

New installations:

8544986 kit adapter, gas and oil equalization line, 1 ¾” rotalock to 7/8” (22,2 mm) brazing

The adapter kit is for 1 x compressor and includes: 1 ¾” nut (# 8559733), adapter (# 8561990), teflon gasket (# 2050772) and could be used to install a 7/8” (22 mm) gas and oil equalization line.



Adapterkit
1 ¾” rotalock to 7/8” brazing

Retrofit, compressor replacement in existing parallel configurations:

8563327 kit adapter retrofit, gas and oil equalization line, 1 ¾” rotalock to 7/8” (22,2 mm) brazing

The adapter kit is for 1 x compressor and includes: nut 1 ¾” (# 8559733), adapter 1 ¾” to 1 ¼” (# 8563714), teflon gasket (# 2050772), nut 1 ¼” (# 3163766), adapter 1 ¼” to 7/8” (# 8562959) and teflon gasket (# 3163799).

This adapter kit is designed to install a compressor with the new 1 ¾” sight glass design into an existing parallel tubing system.

Recommended adapter torque: nut 1 ¾” 170-180 Nm, nut 1 ¼” 100-110 Nm

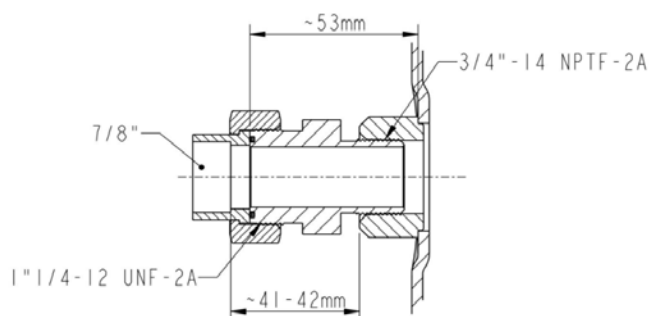


Figure: old ¾” NPTF adapter kit

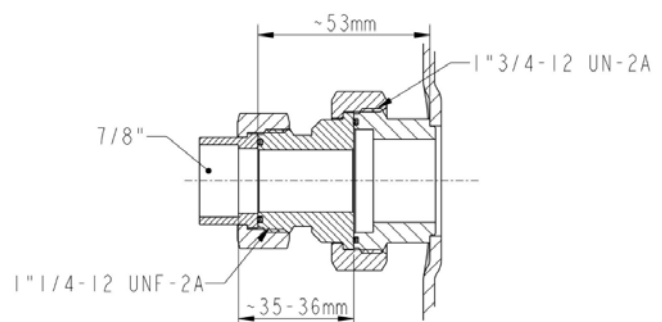


Figure: new retrofit adapter kit

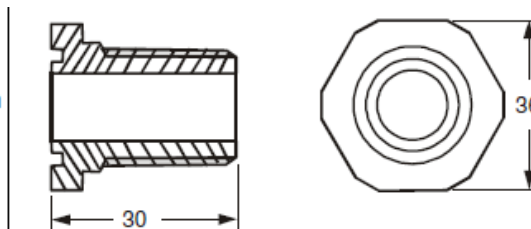
Active oil management:

When using active oil management ALCO Traxoil, a new adapter is required.



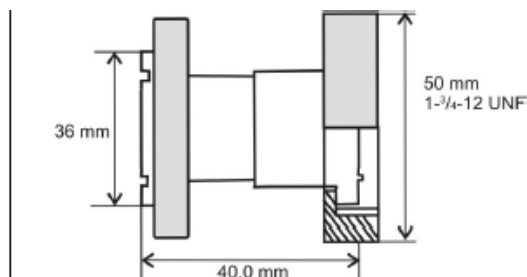
Until May 2012 Kit # 3131483 (OM3 Traxoil CCA including OM3 Traxoil, CCA adapter, gaskets, power and relay cable) was used for Sight glass 3/4" – 14 NPTF.

OM0-CCA (805 039) Screw adapter 3/4"-14 NPTF
as used in CCA
Additional flange ring for adapter / base unit connection
(included)



Starting in May 2012 Kit # 3131529 (OM3 Traxoil CCD including OM3 Traxoil, CCD adapter, gaskets, power and relay cable) needs to be used for Sight glass 1 3/4" – 12 UN

OM0-CCD (805 042) Rotalock adapter 1-3/4"-12 UNF
one piece Adapter consists of OM0-CCA and Rotalock
adapter 1-3/4"-12 UNF



For compressor replacement: a kit with the adapter CCD only is available from ALCO:
805 042 OM0 – CCD adapter CCD + gaskets

For more information please contact your Emerson Climate Technologies representative.