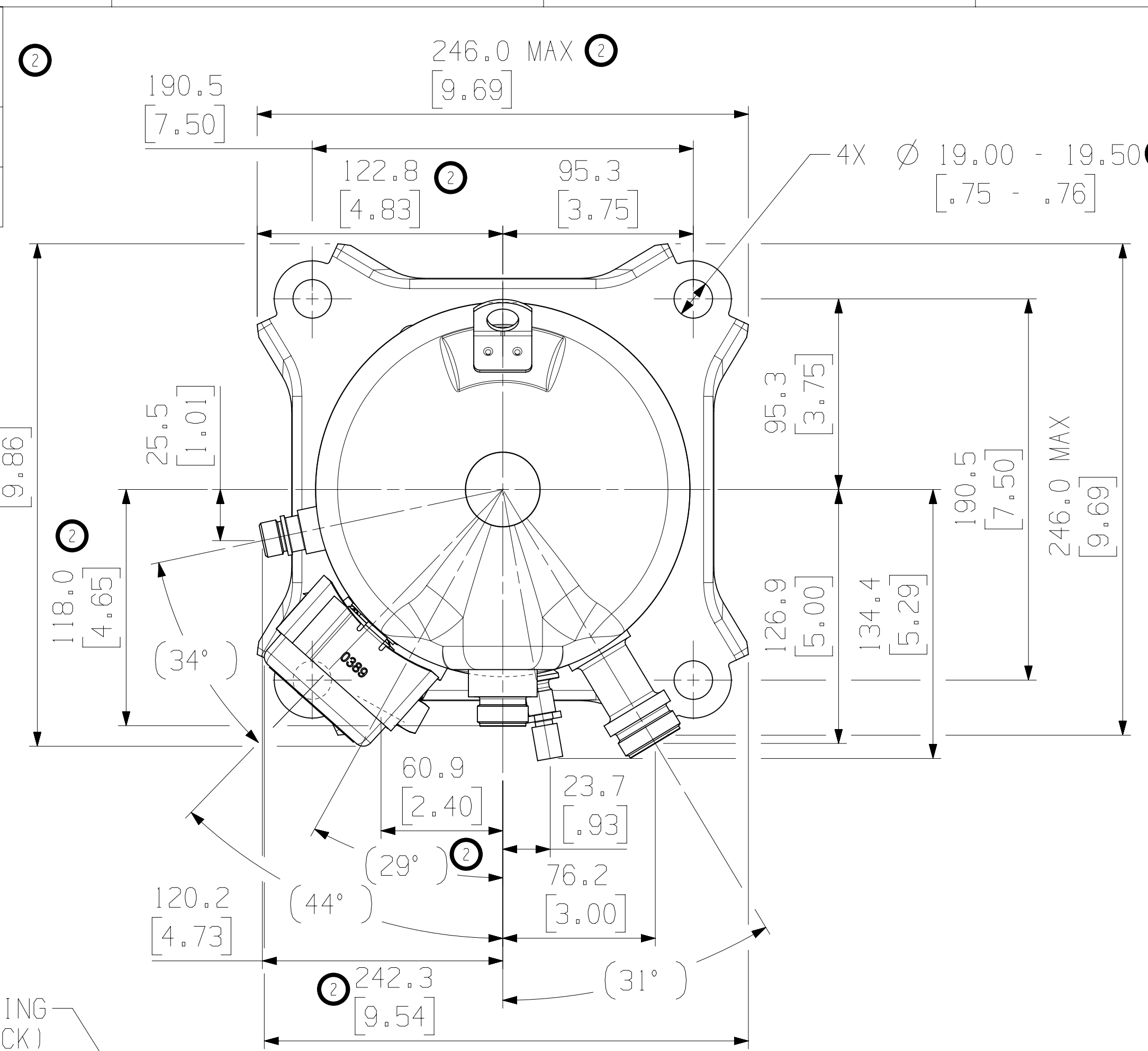


| PART NO. | MODEL NUMBER | DISCHARGE FITTING |
|-------------|----------------------|-------------------|
| 497-1555-00 | ZF13/15/18KQE-**-551 | C |
| 497-1555-01 | ZF25KQE-**-551 | D |



| MOTOR TYPE | Ø K PIN CIRCLE |
|-------------------|------------------|
| TFC TF5 PFV | 13.46 [0.530] |
| TFD TFP TF7 | 17.45 [0.687] |

| SPECIFICATIONS | |
|----------------|-------------------|
| ES NO. | DESCRIPTION |
| ES81-159 | CLEANLINESS |
| ES81-250 | IDENTIFICATION |
| ES92-155 | CONVERSION-METRIC |

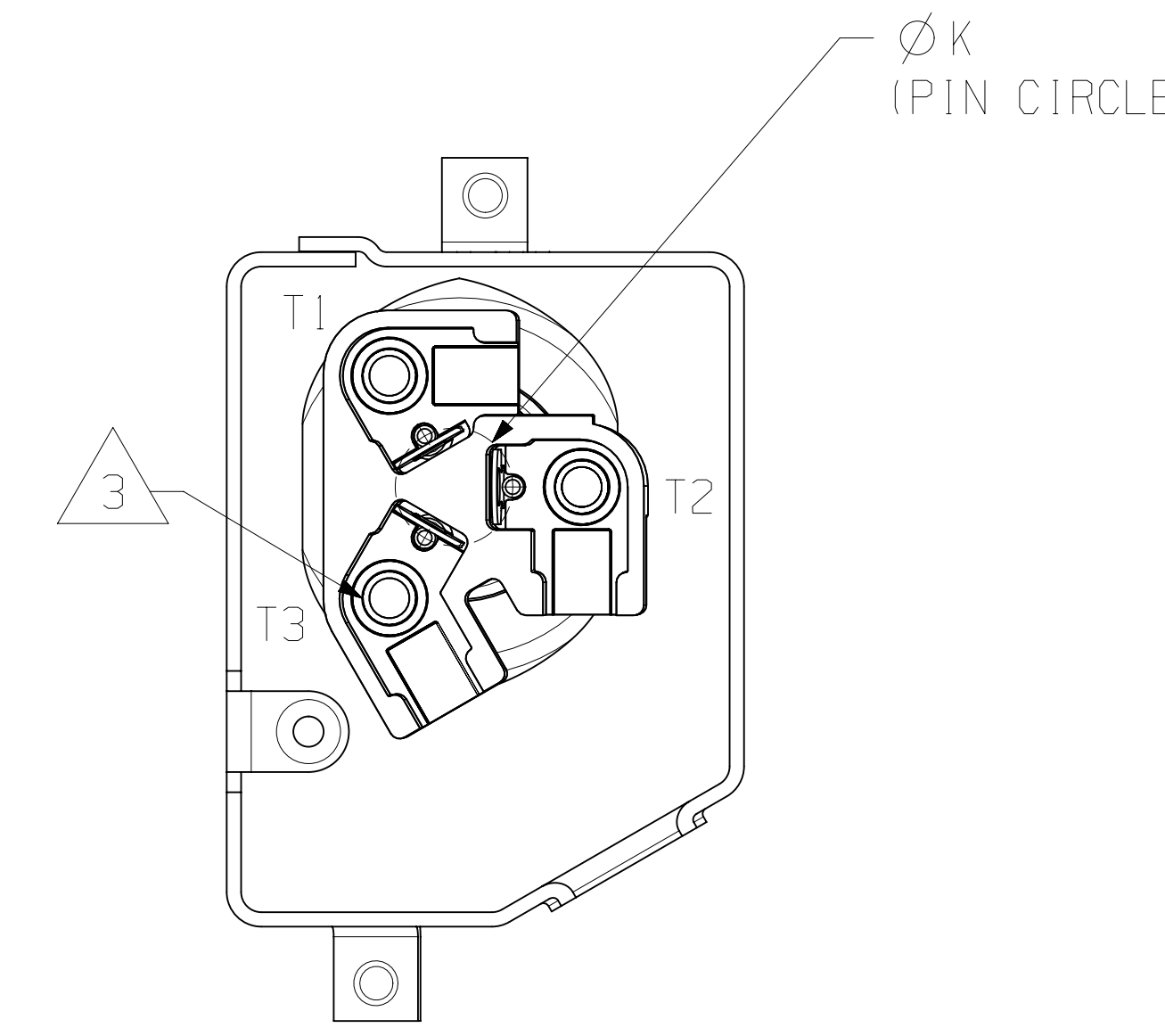
NOTES:

1 ALL TOLERANCES ± 1.50 [0.060] UNLESS OTHERWISE SPECIFIED.

DUE TO ACCUMULATED ASSEMBLY TOLERANCES THE LISTED COMPONENTS MAY VARY FROM THE MOUNTING HOLES AS SHOWN BELOW:

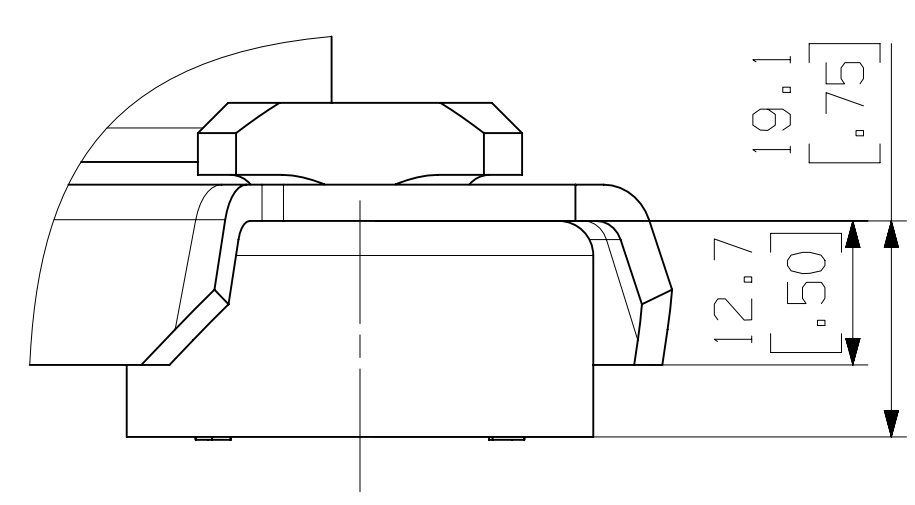
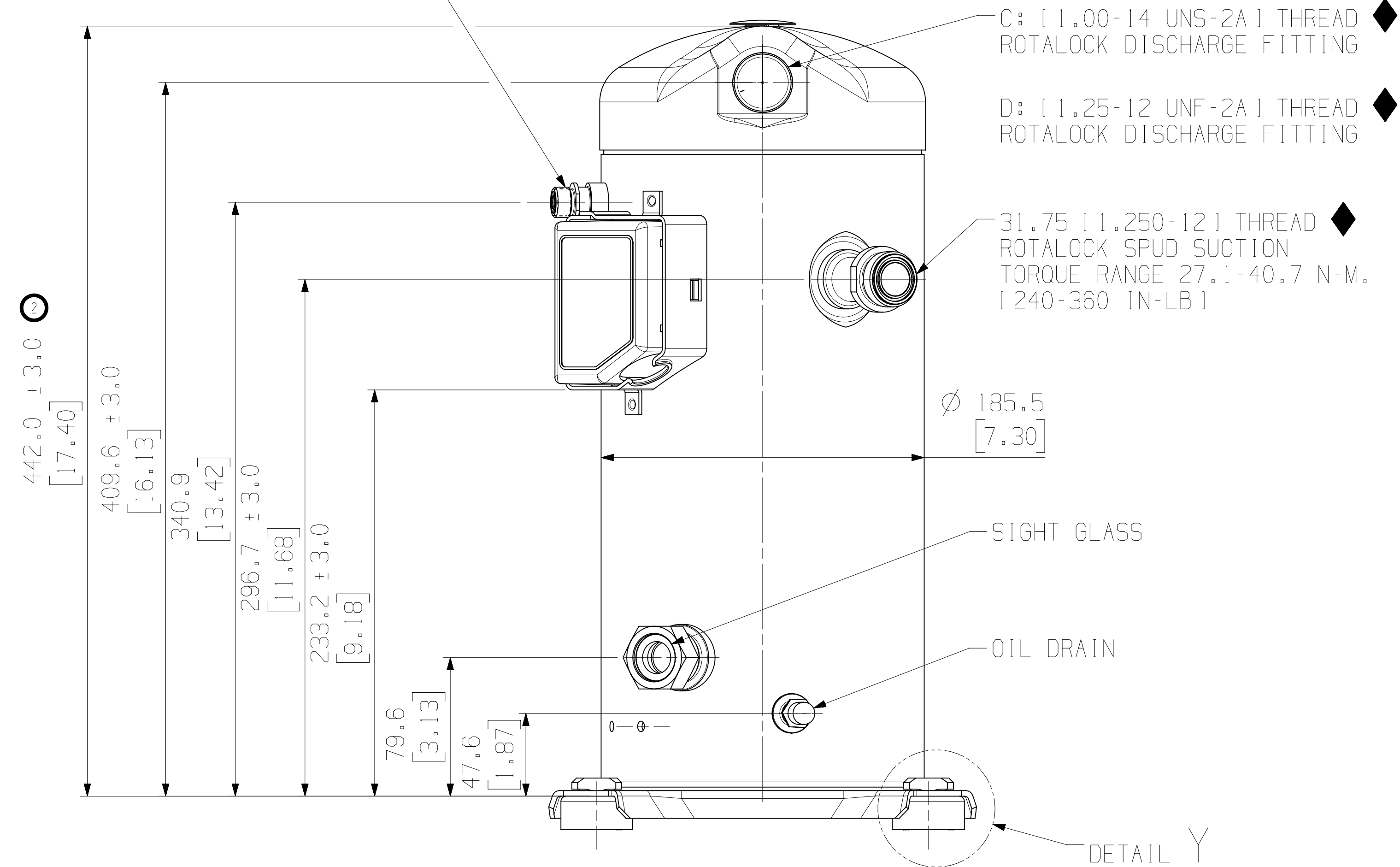
- ◆ ALL FITTING: ± 3.0 [0.12]
- 2. TUBE ENDS MUST BE PLUGGED.
- 3 TORQUE T-BLOCK SCREWS TO 2.4-2.6 Nm [21-23 IN LBS].
- 4. FOR MORE INFORMATION SEE PRODUCT CATALOG.
- 5. FULL HEIGHT OF COMPRESSOR DOES NOT INCLUDE MOUNTING SPACERS.
- 6. MOUNTING KIT:

| | |
|-------------------|-------------|
| GROMMET DUROMETER | 4 FOOT KIT |
| 35-45 | 527-0116-00 |



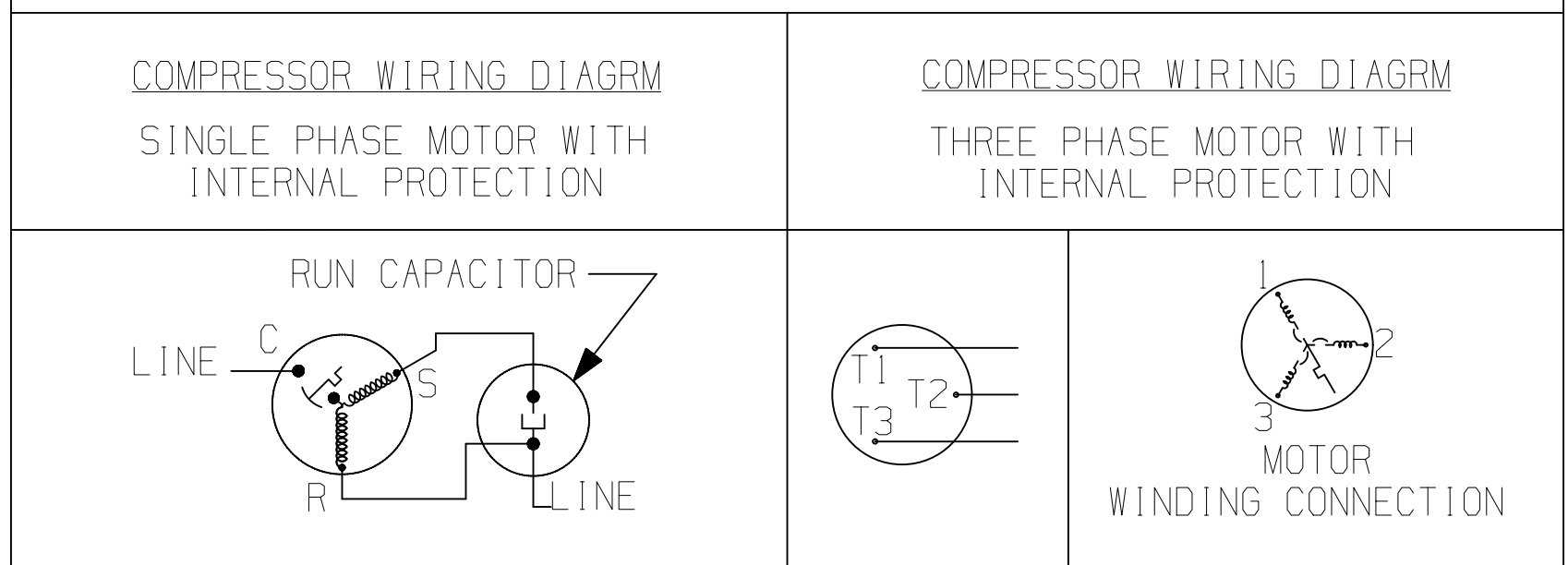
SCALE 1:1

LIQUID INJECTION FITTING (ROTALOCK) [1 1/16-16 UN-2A] THREADS PER BOM



DETAIL Y SCALE 3:2

USE COPPER CONDUCTORS ONLY. USE MINIMUM 75° C WIRE FOR AMPACITY DETERMINATION. INTERNAL MOTOR PROTECTION - ALLOW TIME FOR RESET. OVERCURRENT PROTECTION DEVICE RATING AND TYPE MUST BE IN ACCORDANCE WITH REGULATORY AGENCY END PRODUCT APPROVALS - SEE SYSTEM NAMEPLATE. CRANKCASE HEATER, WHEN APPLIED, MUST BE CONNECTED ONLY TO ITS RATED VOLTAGE. TO CORRECT IMPROPER ROTATION OF THREE PHASE MODELS, SWITCH ANY TWO SUPPLY LINES. REFER TO THE APPLICABLE SYSTEM WIRING DIAGRAM.



| ECN | REV. | DESCRIPTION | DATE | BY | CHKD | APPR |
|-----------|------|-----------------------------|----------|----|------|------|
| ECN302273 | 3 | ADD TF5 | 11-15-17 | AZ | AG | AW |
| ECN301663 | 2 | REDRAWN & UPDATE DIMENSIONS | 03-28-17 | AZ | LG | AW |
| ECN007246 | 0 | RELEASED | 06-19-13 | FY | WH | SL |

| ENG NOTICE NO. | REV. NO. | REVISIONS | DATE | BY | CHKD | APPR |
|---|----------|-----------|--------------|----|--------------------------------|------|
| CONFIDENTIALITY NOTICE | | | | | | |
| THIS DRAWING AND INFORMATION CONTAINED HEREIN ARE THE EXCLUSIVE PROPERTY OF EMERSON CLIMATE TECHNOLOGIES, INC. AND SHALL BE RETURNED UPON DEMAND AND SHALL NOT BE REPRODUCED IN WHOLE OR IN PART, DISCLOSED TO ANYONE ELSE OR USED, WITHOUT THE WRITTEN CONSENT OF EMERSON CLIMATE TECHNOLOGIES, INC. | | | | | | |
| MATERIAL SPECIFICATION | | | DRAWN BY | | SUPERSEDES DWG. NO. / REV. NO. | |
| N/A | | | AZ | | 497-1555-00/001 | |
| TITLE | | | DATE | | SCALE | |
| REF DWG-WELD COMP ASSM | | | 03-28-17 | | 1:2 | |
| DRAWING NUMBER | | | SHEET 1 OF 1 | | DWG | |
| 497-1555-00 | | | | | 4 | |
| | | | | | SIZE | |
| | | | | | 4 | |



INTERPRET PER ASME Y14.5M-1994 AND EMERSON CLIMATE TECHNOLOGIES, INC. DESIGN STANDARDS DS2002

DO NOT SCALE DRAWING

THIRD ANGLE PROJECTION

CRITICAL PRODUCT CHARACTERISTICS

UNLESS OTHERWISE SPECIFIED DIMENSIONS ARE MILLIMETER OR (1 INCH)

TOLERANCES:

1- PLACE : ± 0.13

2- PLACE : ± 0.25

ANGULAR : ± 1°