



Compressor
Voltage Code : TZ

AG2513P-TZ

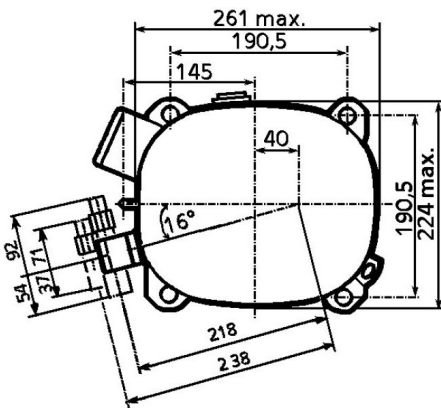
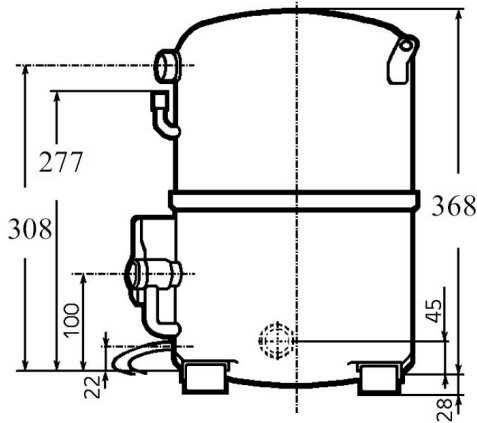
Low Temp. Commercial (BP)

400V 3~ 50Hz / 440V 3~ 60 Hz

R404A

AG2513P-TZ1A

Operating conditions :	Tropical... / 50 Hz / Dew	Sound Power ISO3745 / ISO 3743-1
Evaporating Temp. : -25.0 °C Superheat : 45.0 K Return gas temp. : 20.0 °C Condensing Temp. : 50.0 °C Subcooling : 0.00 K Liquid : 49.7 °C	Refrig. Capacity : 2393 Watt Power Input : 2393 Watt Amps : 4.42 A C.O.P : 1.00 Watt/W	78 dBA



Displacement (cc)	100,7
Net Weight (Kg)	44.0
Oil Quantity (cc)	1760.0
Oil Type	Polyolester
Expansion Device	Capillary_Tube/Expansion_Valve
Cooling	Fan
Main Winding (Ohm)	4.6
Current	
RLA (A)	4,3 4,4
MCC (A)	8,5 8,9
LRA (A)	42 43
Electrical Equipment	TRI
Overload	Interne
Refrigerating connection for	
Suction Tube	22,2 (7/8")
Discharge Tube	15,9 (5/8")
Process Tube	6,35 (1/4")

Certificates :

Note : Tecumseh reserves the right to change information contained in this document without notification.

Selection program - V4.6_2024205 - 08/08/2024



Tecumseh

AG2513P-TZ	Tension TZ : 400V 3~ 50Hz / 440V 3~ 60 Hz
-------------------	--

Les performances sont données dans les conditions EN12900 :	Gaz aspirés :	20.0 °C
Condition Dew	Sous refroidissement :	0.0 K
The performance data are in EN12900 conditions :	Return gas :	20.0 °C
Dew Condition	Subcooling :	0.0 K

© 2024 Tecumseh Products Company
All rights reserved

50 Hz R404A

N°3566

4 T condensation	5 T évaporation	(°C)	-40	-35	-30	-25	-20	-15	-10
30	1 P frigorifique	(Watt)	1428	2212	3194	4399	5848	7565	9573
	2 P absorbée	(W)	1387	1755	2125	2498	2876	3257	3643
	3 I absorbée	(A)	3.36	3.71	4.09	4.52	4.99	5.50	6.04
40	1 P frigorifique	(Watt)	872	1534	2358	3367	4585	6035	7740
	2 P absorbée	(W)	1213	1631	2057	2492	2937	3392	3858
	3 I absorbée	(A)	3.13	3.55	4.02	4.52	5.06	5.65	6.27
50	1 P frigorifique	(Watt)		912	1578	2393	3381	4565	5967
	2 P absorbée	(W)		1414	1896	2393	2905	3433	3978
	3 I absorbée	(A)		3.29	3.84	4.42	5.04	5.70	6.40
60	1 P frigorifique	(Watt)			882	1504	2262	3181	4282
	2 P absorbée	(W)			1628	2186	2765	3366	3990
	3 I absorbée	(A)			3.56	4.21	4.91	5.65	6.43

60 Hz R404A

N°3566

4 T condensation	5 T évaporation	(°C)	-40	-35	-30	-25	-20	-15	-10
30	1 P frigorifique	(Watt)	1810	2769	3923	5292	6899	8763	10907
	2 P absorbée	(W)	1717	2170	2600	3026	3465	3935	4455
	3 I absorbée	(A)	3.22	3.66	4.13	4.64	5.18	5.77	6.39
40	1 P frigorifique	(Watt)	1050	1910	2932	4137	5547	7182	9065
	2 P absorbée	(W)	1421	1993	2533	3061	3594	4149	4746
	3 I absorbée	(A)	2.87	3.43	4.03	4.67	5.35	6.06	6.80
50	1 P frigorifique	(Watt)		1063	1941	2970	4171	5566	7175
	2 P absorbée	(W)		1626	2295	2943	3587	4247	4939
	3 I absorbée	(A)		3.03	3.76	4.52	5.33	6.16	7.04
60	1 P frigorifique	(Watt)			1002	1842	2822	3964	5288
	2 P absorbée	(W)			1856	2642	3416	4198	5004
	3 I absorbée	(A)			3.30	4.20	5.13	6.09	7.10

1 = cooling capacity 2 = power input 3 = current 4 = condensing temperature 5 = evaporating temperature

Nota : Tecumseh se réserve le droit de modifier les informations contenues dans ce document sans préavis.

Note : Tecumseh reserves the right to change information contained in this document without notification.