



Compressor
Voltage Code : FZ

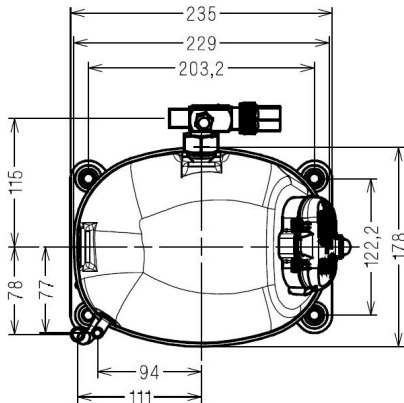
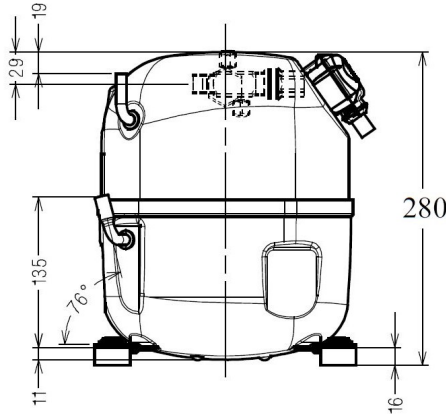
AJ4513P-FZ

High Temp. Commercial (HP)

220 - 240V 1~ 50 Hz

R452A / R404A / R448A / R449A / R455A / R454C AJ4513P-FZ3A

Conditions	Frequency	Nominal Cooling Capacity		Sound Power ISO3745 / ISO 3743-1
		Watts	BTU/h	
EN12900_MHP / R452A	50 Hz	1776	6057	64 dBA
EN12900_MHP / R404A	50 Hz	1827	6229	64 dBA
EN12900_MHP / R448A	50 Hz	1686	5751	64 dBA
EN12900_MHP / R449A	50 Hz	1686	5751	64 dBA
EN12900_MHP / R455A	50 Hz	1573	5364	64 dBA
EN12900_MHP / R454C	50 Hz	1412	4814	64 dBA



Displacement (cc)	24,2
Net Weight (Kg)	21.4
Oil Quantity (cc)	475.0
Oil Type	Polyolester
Expansion Device	Capillary_Tube/Expansion_Valve
Cooling	Fan
Main Winding (Ohm)	2.7
Start Winding (Ohm)	7.9
Current	
RLA (A)	6,8
MCC (A)	11,3
LRA (A)	33
Electrical Equipment	CSR
Overload	MST16AHW
Time Check	2.8s - 5.2s / 32.5 A
Open Temp	135° C
Close Temp	61° C
Optional	T0653
Start Capacitor	88 µF / 330 V
Run Capacitor	15 µF / 400 V
Potential Relay	RVA3AN**
Pick Up	260/289V
Drop Out	50/110V
Refrigerating connection for	
Suction Tube	15.9 (5/8")
Discharge Tube	7.9 (5/16")
Process Tube	6.35 (1/4")

* EN12900_MHP : T°Cond. 45.0°C / T°Evap. -10.0°C / T°Return gas temp.. 20.0°C
T°Subcooling. 0.0K

Certificates :



Tecumseh

AJ4513P-FZ	Tension FZ : 220 - 240V 1~ 50 Hz
-------------------	---

Les performances sont données dans les **conditions EN12900_MHP** :
 Condition Dew
 The performance data are in **EN12900_MHP conditions** :
 Dew Condition

Gaz aspirés : 20.0 °C
 Sous refroidissement : 0.0 K
 Return gas : 20.0 °C
 Subcooling : 0.0 K

50 Hz R452A											
											N°3650
4 T condensation	5 T évaporation	(°C)	-25	-20	-15	-10	-5	0	5	10	15
30	1 P frigorifique	(Watt)	1099	1462	1899	2418	3025	3730	4541	5465	6512
	2 P absorbée	(W)	618	697	770	836	897	953	1006	1054	1100
	3 I absorbée	(A)	3.44	3.72	3.99	4.24	4.47	4.69	4.89	5.08	5.25
40	1 P frigorifique	(Watt)		1166	1546	1990	2506	3102	3785	4565	5449
	2 P absorbée	(W)		724	821	910	992	1068	1139	1206	1268
	3 I absorbée	(A)		3.79	4.18	4.56	4.92	5.27	5.60	5.92	6.23
50	1 P frigorifique	(Watt)			1188	1560	1987	2475	3035	3672	4397
	2 P absorbée	(W)			849	968	1079	1182	1279	1371	1457
	3 I absorbée	(A)			4.28	4.79	5.29	5.77	6.24	6.69	7.13
60	1 P frigorifique	(Watt)				1118	1458	1843	2280	2778	3346
	2 P absorbée	(W)				989	1135	1274	1404	1528	1645
	3 I absorbée	(A)				4.93	5.56	6.18	6.78	7.37	7.94

50 Hz R404A											
											N°3648
4 T condensation	5 T évaporation	(°C)	-25	-20	-15	-10	-5	0	5	10	15
30	1 P frigorifique	(Watt)	1171	1542	1984	2505	3113	3815	4619	5531	6560
	2 P absorbée	(W)	654	736	809	876	937	992	1043	1088	1131
	3 I absorbée	(A)	3.65	3.93	4.19	4.44	4.67	4.88	5.07	5.24	5.40
40	1 P frigorifique	(Watt)	900	1228	1610	2053	2563	3149	3818	4577	5435
	2 P absorbée	(W)	662	768	865	955	1037	1112	1181	1244	1302
	3 I absorbée	(A)	3.60	4.02	4.41	4.79	5.14	5.48	5.81	6.11	6.40
50	1 P frigorifique	(Watt)		908	1233	1600	2016	2489	3027	3637	4326
	2 P absorbée	(W)		772	900	1019	1129	1231	1325	1413	1494
	3 I absorbée	(A)		4.02	4.54	5.05	5.54	6.01	6.46	6.89	7.31
60	1 P frigorifique	(Watt)			845	1140	1465	1829	2239	2702	3226
	2 P absorbée	(W)			892	1047	1192	1328	1455	1573	1684
	3 I absorbée	(A)			4.58	5.22	5.84	6.44	7.02	7.59	8.14

1 = cooling capacity 2 = power input 3 = current 4 = condensing temperature 5 = evaporating temperature

Nota : Tecumseh se réserve le droit de modifier les informations contenues dans ce document sans préavis.

Note : Tecumseh reserves the right to change information contained in this document without notification.

© 2024 Tecumseh Products Company
All rights reserved



Tecumseh

AJ4513P-FZ	Tension FZ : 220 - 240V 1~ 50 Hz
-------------------	---

Les performances sont données dans les conditions EN12900_MHP :	Gaz aspirés :	20.0 °C
Condition Dew	Sous refroidissement :	0.0 K
The performance data are in EN12900_MHP conditions :	Return gas :	20.0 °C
Dew Condition	Subcooling :	0.0 K

50 Hz R448A (*)											
											N°3651
4 T condensation	5 T évaporation	(°C)	-25	-20	-15	-10	-5	0	5	10	15
30	1 P frigorifique	(Watt)	968	1320	1747	2256	2857	3560	4373	5307	6370
	2 P absorbée	(W)	576	649	717	781	841	896	946	992	1034
	3 I absorbée	(A)	3.21	3.47	3.72	3.96	4.19	4.40	4.60	4.78	4.93
40	1 P frigorifique	(Watt)		1059	1433	1875	2394	2998	3697	4501	5418
	2 P absorbée	(W)		680	770	854	933	1007	1075	1138	1195
	3 I absorbée	(A)		3.56	3.92	4.28	4.63	4.97	5.29	5.59	5.87
50	1 P frigorifique	(Watt)			1119	1498	1938	2448	3037	3715	4491
	2 P absorbée	(W)			802	916	1023	1124	1218	1306	1388
	3 I absorbée	(A)			4.05	4.54	5.02	5.48	5.94	6.38	6.79
60	1 P frigorifique	(Watt)				1121	1487	1907	2391	2948	3588
	2 P absorbée	(W)				941	1086	1222	1352	1474	1589
	3 I absorbée	(A)				4.69	5.31	5.93	6.53	7.11	7.68

50 Hz R449A (*)											
											N°3649
4 T condensation	5 T évaporation	(°C)	-25	-20	-15	-10	-5	0	5	10	15
30	1 P frigorifique	(Watt)	968	1320	1747	2256	2857	3560	4373	5307	6370
	2 P absorbée	(W)	576	649	717	781	841	896	946	992	1034
	3 I absorbée	(A)	3.21	3.47	3.72	3.96	4.19	4.40	4.60	4.78	4.93
40	1 P frigorifique	(Watt)		1059	1433	1875	2394	2998	3697	4501	5418
	2 P absorbée	(W)		680	770	854	933	1007	1075	1138	1195
	3 I absorbée	(A)		3.56	3.92	4.28	4.63	4.97	5.29	5.59	5.87
50	1 P frigorifique	(Watt)			1119	1498	1938	2448	3037	3715	4491
	2 P absorbée	(W)			802	916	1023	1124	1218	1306	1388
	3 I absorbée	(A)			4.05	4.54	5.02	5.48	5.94	6.38	6.79
60	1 P frigorifique	(Watt)				1121	1487	1907	2391	2948	3588
	2 P absorbée	(W)				941	1086	1222	1352	1474	1589
	3 I absorbée	(A)				4.69	5.31	5.93	6.53	7.11	7.68

1 = cooling capacity 2 = power input 3 = current 4 = condensing temperature 5 = evaporating temperature

(*) Veuillez vous référer strictement aux Recommandations d'Utilisation et Bulletins Marketing Tecumseh du fait de la température de refoulement élevée pour les applications LBP.
 (*) Due to very high discharge temperature especially on LBP conditions, please strictly refer to Tecumseh Guidelines & Marketing Bulletin when using this refrigerant.

Nota : Tecumseh se réserve le droit de modifier les informations contenues dans ce document sans préavis.

Note : Tecumseh reserves the right to change information contained in this document without notification.

© 2024 Tecumseh Products Company
All rights reserved





Tecumseh

AJ4513P-FZ	Tension FZ : 220 - 240V 1~ 50 Hz
-------------------	---

Les performances sont données dans les **conditions EN12900_MHP** :
 Condition Dew
 The performance data are in **EN12900_MHP conditions** :
 Dew Condition

Gaz aspirés : 20.0 °C
 Sous refroidissement : 0.0 K
 Return gas : 20.0 °C
 Subcooling : 0.0 K

50 Hz R455A											
 N°3278											
4 T condensation	5 T évaporation	(°C)	-25	-20	-15	-10	-5	0	5	10	15
30	1 P frigorifique	(Watt)	900	1229	1627	2105	2674	3347	4135	5050	6103
	2 P absorbée	(W)	560	628	689	742	786	821	847	861	865
	3 I absorbée	(A)	2.92	3.18	3.44	3.68	3.89	4.07	4.19	4.26	4.26
40	1 P frigorifique	(Watt)		987	1337	1752	2244	2825	3506	4299	5215
	2 P absorbée	(W)		654	738	816	886	949	1003	1048	1084
	3 I absorbée	(A)		3.33	3.67	4.01	4.32	4.61	4.86	5.06	5.19
50	1 P frigorifique	(Watt)			1042	1394	1808	2295	2867	3536	4314
	2 P absorbée	(W)			762	865	963	1054	1139	1216	1285
	3 I absorbée	(A)			3.79	4.24	4.68	5.10	5.49	5.84	6.13
60	1 P frigorifique	(Watt)				1046	1380	1772	2235	2779	3417
	2 P absorbée	(W)				893	1019	1141	1257	1367	1471
	3 I absorbée	(A)				4.34	4.92	5.49	6.04	6.56	7.04

50 Hz R454C											
 N°3279											
4 T condensation	5 T évaporation	(°C)	-25	-20	-15	-10	-5	0	5	10	15
30	1 P frigorifique	(Watt)	781	1086	1458	1906	2439	3067	3801	4649	5620
	2 P absorbée	(W)	530	597	656	705	746	778	799	811	813
	3 I absorbée	(A)	2.87	3.13	3.36	3.56	3.73	3.86	3.97	4.05	4.09
40	1 P frigorifique	(Watt)		865	1190	1578	2038	2580	3214	3950	4797
	2 P absorbée	(W)		621	702	776	841	898	947	987	1018
	3 I absorbée	(A)		3.19	3.54	3.86	4.15	4.41	4.64	4.83	5.00
50	1 P frigorifique	(Watt)			922	1247	1632	2086	2618	3239	3958
	2 P absorbée	(W)			726	823	913	997	1073	1142	1202
	3 I absorbée	(A)			3.64	4.08	4.49	4.87	5.22	5.53	5.82
60	1 P frigorifique	(Watt)				931	1237	1600	2029	2533	3122
	2 P absorbée	(W)				853	969	1079	1183	1281	1372
	3 I absorbée	(A)				4.22	4.75	5.24	5.71	6.15	6.55

1 = cooling capacity 2 = power input 3 = current 4 = condensing temperature 5 = evaporating temperature

Nota : Tecumseh se réserve le droit de modifier les informations contenues dans ce document sans préavis.

Note : Tecumseh reserves the right to change information contained in this document without notification.

© 2024 Tecumseh Products Company
All rights reserved