



Compressor
Voltage Code : FZ

AJ2432P-FZ

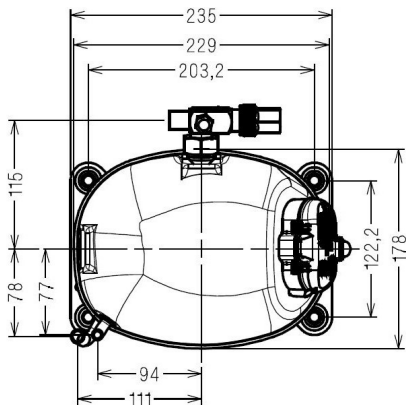
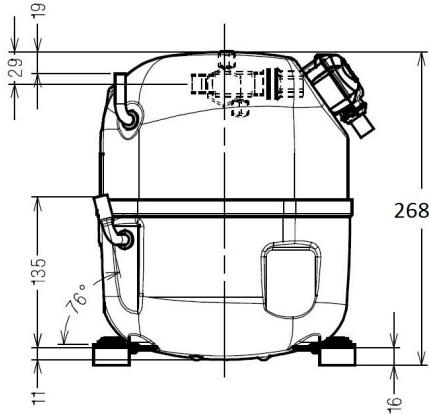
Low Temp. Commercial (BP)

220 - 240V 1~ 50 Hz

R452A / R404A / R455A / R454C

AJ2432P-FZ3A

Conditions	Frequency	Nominal Cooling Capacity		Sound Power ISO3745 / ISO 3743-1
		Watts	BTU/h	
Standard TE / R452A	50 Hz	720	2456	56 dBA
Standard TE / R404A	50 Hz	784	2672	56 dBA
Standard TE / R455A	50 Hz	696	2372	56 dBA
Standard TE / R454C	50 Hz	632	2155	56 dBA



Displacement (cc)	18,3
Net Weight (Kg)	19,8
Oil Quantity (cc)	475,0
Oil Type	Polyolester
Expansion Device	Capillary_Tube/Expansion_Valve
Cooling	Fan
Main Winding (Ohm)	4,5
Start Winding (Ohm)	9,8
Current	
RLA (A)	2,5
MCC (A)	5,9
LRA (A)	20,8
Electrical Equipment	CSR
Overload	T0348
Time Check	7,5s - 14s / 15,4 A
Open Temp	105° C
Close Temp	52° C
Optional	MRA38111
Start Capacitor	88 µF / 330 V
Run Capacitor	15 µF / 400 V
Potential Relay	RVA4P**
Pick Up	300/328V
Drop Out	60/121V
Refrigerating connection for	
Suction Tube	12.7 (1/2")
Discharge Tube	7.9 (5/16")
Process Tube	6.35 (1/4")

* Standard TE : T°Cond. 54.5°C / T°Evap. -23.3°C / T°Return gas temp.. 32.0°C
T°Subcooling. 19.7K

Certificates :



Note : Tecumseh reserves the right to change information contained in this document without notification.

Selection program - V4.6_2023296 - 10/25/2023



Tecumseh

AJ2432P-FZ	Tension FZ : 220 - 240V 1~ 50 Hz
-------------------	---

Les performances sont données dans les **conditions Standard TE** :
 Condition Mid

The performance data are in **Standard TE conditions** :
 Mid Condition

Gaz aspirés : 32.0 °C
 Sous refroidissement : 21.0 K

Return gas : 32.0 °C
 Subcooling : 21.0 K

© 2023 Tecumseh Products Company
All rights reserved

50 Hz R452A

N°3600

4 T condensation	5 T évaporation	(°C)	-40	-35	-30	-25	-20	-15	-10
30	1 P frigorifique	(Watt)	336	492	687	925	1212	1554	1955
	2 P absorbée	(W)	346	402	460	521	585	654	729
	3 I absorbée	(A)	1.56	1.80	2.06	2.34	2.64	2.96	3.31
40	1 P frigorifique	(Watt)		419	604	831	1108	1438	1830
	2 P absorbée	(W)		396	467	542	620	705	796
	3 I absorbée	(A)		1.78	2.10	2.43	2.78	3.15	3.55
50	1 P frigorifique	(Watt)			504	717	978	1295	1674
	2 P absorbée	(W)			455	542	634	733	839
	3 I absorbée	(A)			2.06	2.45	2.85	3.27	3.71
60	1 P frigorifique	(Watt)				591	834	1135	1504
	2 P absorbée	(W)				525	630	741	860
	3 I absorbée	(A)				2.39	2.84	3.31	3.79

50 Hz R404A

N°3601

4 T condensation	5 T évaporation	(°C)	-40	-35	-30	-25	-20	-15	-10
30	1 P frigorifique	(Watt)	366	525	722	961	1245	1578	1964
	2 P absorbée	(W)	342	401	459	519	580	645	714
	3 I absorbée	(A)	1.64	1.88	2.14	2.42	2.71	3.02	3.34
40	1 P frigorifique	(Watt)		455	642	870	1142	1463	1837
	2 P absorbée	(W)		399	470	543	619	700	786
	3 I absorbée	(A)		1.88	2.19	2.52	2.87	3.23	3.60
50	1 P frigorifique	(Watt)			546	760	1018	1325	1687
	2 P absorbée	(W)			461	547	637	732	834
	3 I absorbée	(A)			2.18	2.55	2.95	3.36	3.79
60	1 P frigorifique	(Watt)				634	877	1170	1521
	2 P absorbée	(W)				531	635	744	862
	3 I absorbée	(A)				2.51	2.96	3.42	3.90

1 = cooling capacity 2 = power input 3 = current 4 = condensing temperature 5 = evaporating temperature

Nota : Tecumseh se réserve le droit de modifier les informations contenues dans ce document sans préavis.

Note : Tecumseh reserves the right to change information contained in this document without notification.



Tecumseh

AJ2432P-FZ	Tension FZ : 220 - 240V 1~ 50 Hz
-------------------	---

Les performances sont données dans les **conditions Standard TE** :
 Condition Mid

The performance data are in **Standard TE conditions** :
 Mid Condition

Gaz aspirés : 32.0 °C
 Sous refroidissement : 18.3 K

Return gas : 32.0 °C
 Subcooling : 18.3 K

© 2023 Tecumseh Products Company
 All rights reserved

50 Hz R455A

N°3325

4 T condensation	5 T évaporation	(°C)	-40	-35	-30	-25	-20	-15	-10
30	1 P frigorifique	(Watt)	348	506	701	939	1225	1563	1960
	2 P absorbée	(W)	319	375	432	491	552	615	679
	3 I absorbée	(A)	1.48	1.73	2.00	2.28	2.56	2.81	3.01
40	1 P frigorifique	(Watt)	276	426	612	840	1114	1442	1828
	2 P absorbée	(W)	298	361	429	501	578	659	745
	3 I absorbée	(A)	1.41	1.67	1.98	2.32	2.67	3.02	3.33
50	1 P frigorifique	(Watt)		333	508	723	984	1298	1673
	2 P absorbée	(W)		335	411	495	585	683	788
	3 I absorbée	(A)		1.57	1.91	2.30	2.72	3.15	3.58
60	1 P frigorifique	(Watt)			389	588	834	1134	1496
	2 P absorbée	(W)			384	476	578	689	811
	3 I absorbée	(A)			1.76	2.20	2.69	3.20	3.73

50 Hz R454C

N°3324

4 T condensation	5 T évaporation	(°C)	-40	-35	-30	-25	-20	-15	-10
30	1 P frigorifique	(Watt)	306	446	619	827	1075	1367	1708
	2 P absorbée	(W)	300	349	399	450	503	558	614
	3 I absorbée	(A)	1.42	1.62	1.84	2.07	2.31	2.57	2.85
40	1 P frigorifique	(Watt)	238	375	542	743	984	1269	1603
	2 P absorbée	(W)	281	338	398	461	528	598	673
	3 I absorbée	(A)	1.33	1.58	1.85	2.14	2.43	2.74	3.07
50	1 P frigorifique	(Watt)		290	449	642	874	1150	1476
	2 P absorbée	(W)		314	382	455	534	619	709
	3 I absorbée	(A)		1.46	1.78	2.12	2.47	2.83	3.21
60	1 P frigorifique	(Watt)			341	523	745	1011	1329
	2 P absorbée	(W)			352	434	524	621	726
	3 I absorbée	(A)			1.63	2.02	2.42	2.83	3.26

1 = cooling capacity 2 = power input 3 = current 4 = condensing temperature 5 = evaporating temperature

Nota : Tecumseh se réserve le droit de modifier les informations contenues dans ce document sans préavis.

Note : Tecumseh reserves the right to change information contained in this document without notification.