



Compressor  
Voltage Code : TZ

TAJ4519Z-TZ

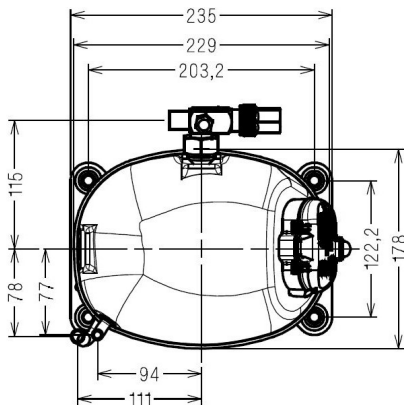
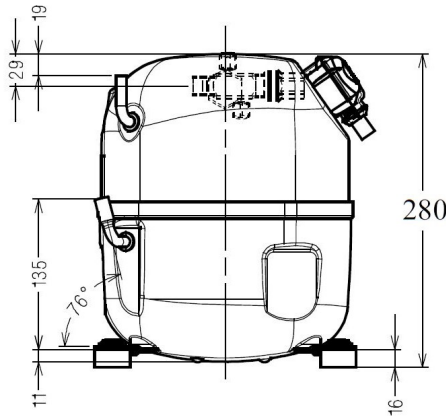
High Temp. Commercial (HP)

400V 3~ 50Hz / 440V 3~ 60 Hz

R404A

AJ4519Z-TZ1C

Operating conditions :	<b>Customized... / 50 Hz / Dew</b>	<b>Sound Power</b> ISO3745 / ISO 3743-1
<b>Evaporating Temp. :</b> -10.0 °C <b>Superheat :</b> 30.0 K <b>Return gas temp. :</b> 20.0 °C <b>Condensing Temp. :</b> 50.0 °C <b>Subcooling :</b> 0.00 K <b>Liquid :</b> 49.7 °C	<b>Refrig. Capacity :</b> 2366 Watt  <b>Power Input :</b> 1575 Watt <b>Amps :</b> 3.37 A <b>C.O.P :</b> 1.50 Watt/W	68 dBA



<b>Displacement (cc)</b>	34,45
<b>Net Weight (Kg)</b>	21.1
<b>Oil Quantity (cc)</b>	475.0
<b>Oil Type</b>	Polyolester
<b>Expansion Device</b>	Capillary_Tube/Expansion_Valve
<b>Cooling</b>	Fan
<b>Main Winding (Ohm)</b>	8.7
<b>Current</b>	
RLA (A)	4   4
MCC (A)	6.2   6.3
LRA (A)	22   23
<b>Electrical Equipment</b>	TRI
<b>Overload</b>	Interne
<b>Refrigerating connection for</b>	
Suction Tube	15.9 (5/8")
Discharge Tube	9.5 (3/8")
Process Tube	6.35 (1/4")

Certificates :

Note : Tecumseh reserves the right to change information contained in this document without notification.

Selection program - V4.6\_2024177 - 07/11/2024



**Tecumseh**

<b>TAJ4519Z-TZ</b>	<b>Tension TZ : 400V 3~ 50Hz / 440V 3~ 60 Hz</b>
--------------------	--

Les performances sont données dans les <b>conditions EN12900</b> :	Gaz aspirés :	20.0 °C
Condition Dew	Sous refroidissement :	0.0 K
The performance data are in <b>EN12900 conditions</b> :	Return gas :	20.0 °C
Dew Condition	Subcooling :	0.0 K

<b>50 Hz R404A</b>											
											<b>N°224SU-TZ</b>
4   T condensation	5   T évaporation	(°C)	-25	-20	-15	-10	-5	0	5	10	15
<b>30</b>	1   P frigorifique	(Watt)	1764	2268	2853	3530	4312	5209	6234	7398	8713
	2   P absorbée	(W)	1003	1122	1238	1350	1459	1565	1668	1769	1867
	3   I absorbée	(A)	2.74	2.86	2.98	3.10	3.23	3.36	3.49	3.63	3.77
<b>40</b>	1   P frigorifique	(Watt)	1384	1849	2369	2958	3626	4385	5248	6225	7328
	2   P absorbée	(W)	1058	1199	1334	1466	1592	1715	1834	1949	2061
	3   I absorbée	(A)	2.72	2.88	3.05	3.22	3.39	3.57	3.75	3.93	4.12
<b>50</b>	1   P frigorifique	(Watt)		1406	1864	2366	2922	3545	4246	5038	5931
	2   P absorbée	(W)		1244	1412	1575	1732	1884	2030	2172	2309
	3   I absorbée	(A)		2.94	3.16	3.37	3.59	3.82	4.05	4.28	4.51
<b>60</b>	1   P frigorifique	(Watt)			1333	1749	2195	2683	3225	3833	4518
	2   P absorbée	(W)			1449	1655	1854	2047	2234	2415	2589
	3   I absorbée	(A)			3.31	3.57	3.84	4.11	4.39	4.67	4.95

<b>60 Hz R404A</b>											
											<b>N°224SU-TZ</b>
4   T condensation	5   T évaporation	(°C)	-25	-20	-15	-10	-5	0	5	10	15
<b>30</b>	1   P frigorifique	(Watt)	2028	2618	3271	4005	4839	5790	6876	8114	9522
	2   P absorbée	(W)	1194	1365	1512	1643	1767	1893	2030	2186	2372
	3   I absorbée	(A)	2.51	2.71	2.92	3.13	3.34	3.57	3.80	4.03	4.27
<b>40</b>	1   P frigorifique	(Watt)	1532	2102	2707	3366	4097	4916	5842	6892	8083
	2   P absorbée	(W)	1163	1397	1596	1771	1930	2082	2236	2400	2584
	3   I absorbée	(A)	2.47	2.70	2.94	3.18	3.43	3.68	3.94	4.21	4.48
<b>50</b>	1   P frigorifique	(Watt)		1554	2108	2687	3310	3994	4756	5614	6586
	2   P absorbée	(W)		1380	1641	1868	2071	2256	2435	2615	2806
	3   I absorbée	(A)		2.72	2.99	3.26	3.54	3.83	4.12	4.41	4.71
<b>60</b>	1   P frigorifique	(Watt)			1483	1979	2491	3035	3630	4292	5041
	2   P absorbée	(W)			1647	1935	2189	2417	2629	2833	3039
	3   I absorbée	(A)			3.07	3.37	3.68	3.99	4.31	4.64	4.97

1 = cooling capacity 2 = power input 3 = current 4 = condensing temperature 5 = evaporating temperature

**Nota : Tecumseh se réserve le droit de modifier les informations contenues dans ce document sans préavis.**

**Note : Tecumseh reserves the right to change information contained in this document without notification.**

© 2024 Tecumseh Products Company  
All rights reserved